



## The Carl D. Perkins Career & Technical Education Act: Partnering with WIOA

WIOA Wednesday Webinar Series  
November 4, 2015

Brian Durham,  
Deputy Director for Academic Affairs  
Illinois Community College Board

## WIOA Partners

### Core Partners

1. WIOA Title I (DOL)
2. Adult Education and Literacy Act (DOE)
3. Wagner-Peyser Act (DOL)
4. Rehabilitation Act Title I (DOE)

### Required Partners

- ▶ **Perkins Act (CTE)**, Community Services Block Grant, Indian and Native American Programs, HUD Employment and Training Programs, Job Corps, Local Veterans' Employment and Disabled Veterans' Outreach Programs, National Farmworker Jobs Program, Senior Community Service Employment Program, Temporary Assistance for Needy Families (TANF), Trade Adjustment Assistance Programs, Unemployment Compensation Programs, and YouthBuild

## What is Perkins?

The Carl D. Perkins Career and Technical Education Act, originally signed into law in 1998 was reauthorized in 2006.

Perkins IV focuses state and local efforts on continuously improving programs to facilitate the academic achievement of CTE students by:

- ▶ strengthening the connections between secondary and postsecondary education;
- ▶ restructuring the way stakeholders, high schools, community colleges, universities, business and parents work together; and
- ▶ increasing state and local accountability standards.

## Perkins Funding

- ▶ In Illinois, Perkins supports CTE at both the secondary and postsecondary level.

Secondary: 60%

Postsecondary: 40%

- ▶ Federal funding has remained relatively consistent, and states are required to meet a Maintenance of Effort (MOE) level of funding.
- ▶ The community college system (48 community colleges) received almost 15 million dollars in FY 2015.

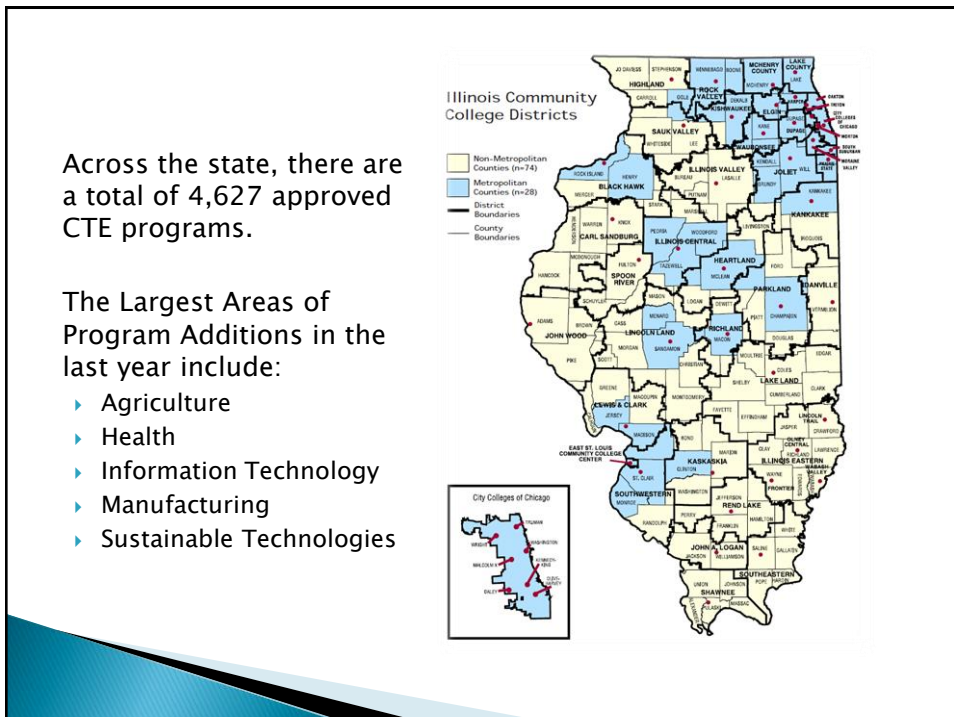
# Who Are We Serving?

## Community Colleges

### CTE Programs and CTE Students

#### CTE Special Populations Students

- Displaced Homemakers
- Economically Disadvantaged
- Individuals with Disabilities
- Limited English Proficient
- Single Parents
- Nontraditional (gender)



## Local Use of Funds

### Required:

1. Integrate academics within CTE programs;
2. Link CTE at the secondary and postsecondary levels by offering at least one CTE Program of Study;
3. Provide work-based learning experiences;
4. Develop, improve or expand the use of technology in CTE;
5. Provide professional development to teachers, faculty, administrators and staff;
6. Evaluate CTE programs including an assessment of how the needs of special populations are being met;
7. Improve, expand and modernize quality CTE programs;
8. Provide services and activities that are of sufficient size, scope and quality to be effective; and
9. Provide activities to prepare Special Populations CTE students for high-skill, high-wage or high-demand occupations.

## Local Use of Funds

### Other Permissible Uses:

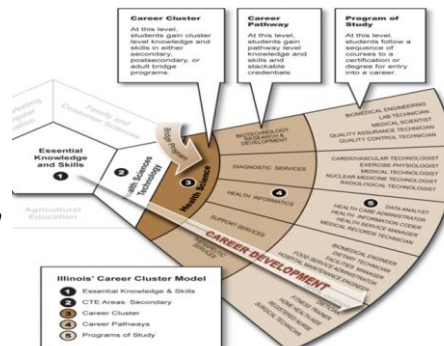
- ▶ Involve parents, businesses and labor organizations
- ▶ Career guidance and academic counseling
- ▶ Faculty externships
- ▶ Assist Career and Technical Student Organizations (CTSO)
- ▶ Mentoring and support services
- ▶ Equipment and instructional materials
- ▶ Expand accessible offerings through the use of distance education
- ▶ Facilitate dual credit, concurrent enrollment and articulation with 4-year institutions
- ▶ Curriculum alignment and development
- ▶ Career-themed learning communities
- ▶ CTE credit bearing portion of adult bridge programs
- ▶ Training and activities for nontraditional (gender) students

## Programs of Study

1. Incorporate secondary and postsecondary education elements;
2. Include coherent and rigorous content aligned with challenging academic standards and relevant career and technical content in a coordinated, non-duplicative progression of courses;
3. May include the opportunity for secondary education students to participate in dual or concurrent enrollment programs or other ways to acquire postsecondary education credits; and
4. Lead to an industry-recognized credential or certificate at the postsecondary level or an associate or baccalaureate degree.

## Programs of Study

- Recipients must have at least one fully developed and fully articulated Program of Study.
- Tools have been developed to scaffold POS creation, implementation, and evaluation: *Expectations Tool, Guiding Principles, Pathways to Results*
- ***Moving toward a more comprehensive and robust Career Pathway System (ICC Goal 3).***



## Performance Measures

- 1P1: Technical Skill Attainment
- 2P1: Credential, Certificate, or Diploma Completers
- 3P1: Student Retention or Transfer
- 4P1: Student Placement
- 5P1: Nontraditional Participation
- 5P2: Nontraditional Completion

## Northeast Region CTE Graduates: Degrees and Certificates

North East Economic Development Region - Illinois Community College System Fiscal Year 2014 Summary of Career and Technical Education Degree and Certificate Graduates					
Dist No.	College	Associate in Applied Science	Certificates of One Year or More	Certificates of Less Than One Year	Total
508	Chicago	(1,106)	(961)	(6,615)	(8,682)
	Daley	224	258	963	1,445
	Kennedy-King	209	193	608	1,010
	Malcolm X	160	72	427	659
	Olive-Harvey	70	48	3,209	3,327
	Truman	191	148	497	836
	Washington	77	79	353	499
	Walbur Wright	175	213	348	736
502	DuPage	791	456	1,495	2,742
509	Egan	366	301	1,097	1,764
512	Harper	458	182	1,792	2,432
525	Joliet	731	299	208	1,238
520	Kankakee	207	138	399	744
523	Kishwaukee	157	112	294	563
532	Lake County	391	360	1,848	2,599
528	McHenry	228	136	755	1,119
524	Morame Valley	499	242	1,067	1,808
527	Morton	120	78	148	346
535	Oakton	448	121	610	1,179
515	Prairie State	170	103	573	846
510	South Suburban	145	88	191	424
504	Triton	295	89	235	619
516	Waubesaee	247	84	689	1,020
North East Total		6,359	3,750	18,016	28,125
State Total		11,555	6,876	28,142	46,573
% of State Total		55.0%	54.5%	64.0%	60.4%

Source of Data: ICCB Centralized Data System

# Northeast Region Graduates by Career Cluster

North East Economic Development Region - Illinois Community College System Fiscal Year 2014 Summary of Graduates by Career Cluster																			
Dist. No.	College	Agriculture, Food, & Natural Resources	Architecture & Construction	Arts, AV Technology & Communications	Business Management & Administration	Education & Training	Finance	Government & Public Administration	Health Science	Hospitality & Tourism	Human Services	Information Technology	Law, Public Safety, Corrections & Security	Manufacturing	Marketing	Science, Technology, Engineering & Mathematics	Transportation, Distribution & Logistics	Other	Total*
508	Chicago	(10)	(820)	(47)	(369)	(2,953)	(6)	(0)	(1,154)	(350)	(720)	(493)	(419)	(66)	(31)	(282)	(1,119)	(16)	(11,825)
	Daley	9	465	0	94	227	0	0	478	0	146	40	153	32	10	15	0	0	1,669
	Kennedy-King	0	256	27	47	254	0	0	69	348	122	28	52	23	1	7	17	0	1,251
	Malcolm X	0	0	0	0	282	0	0	612	0	27	3	0	0	0	19	0	16	959
	Olive-Harvey	0	0	0	20	184	0	0	23	0	152	30	41	6	0	12	3,041	0	3,509
	Truman	0	3	1	36	548	0	0	416	0	186	68	45	1	7	52	61	0	1,424
	Washington	1	11	17	61	706	0	0	2	79	274	15	0	4	62	0	0	0	1,233
	Wilbur Wright	0	85	2	111	754	0	0	526	0	8	51	113	6	9	115	0	0	1,780
502	DuPage	50	72	132	323	1,355	0	0	1,173	106	149	232	217	79	67	335	36	0	4,326
509	Elgin	0	160	38	110	514	0	0	545	243	104	6	129	129	11	210	268	0	2,467
512	Hawper	3	113	71	282	1,180	1	0	1,242	48	65	114	177	169	91	142	34	0	3,723
525	Joliet	41	100	13	103	744	0	0	400	115	28	56	94	130	7	127	78	0	2,036
520	Kankakee	0	23	17	85	171	0	0	263	0	22	1	77	110	0	50	16	0	835
523	Kishwaukee	63	16	1	37	76	0	0	342	0	0	8	11	24	0	289	60	0	927
532	Lake County	31	150	8	135	893	0	0	1,311	169	36	124	174	66	6	150	255	0	3,508
528	McHenry	14	17	40	287	113	0	0	479	38	32	23	87	46	2	439	42	0	1,659
524	Moraine Valley	2	113	29	88	448	0	0	419	67	37	445	112	207	6	842	80	0	2,995
527	Morton	0	24	4	53	173	0	0	135	0	82	5	28	3	0	80	14	0	601
535	Oakton	0	31	10	73	416	2	0	416	0	73	68	48	22	5	13	28	0	1,205
515	Prairie State	0	65	30	19	248	0	0	406	0	81	24	86	33	1	61	70	0	1,124
510	South Suburban	0	10	17	72	124	0	0	171	0	45	34	58	1	3	108	0	0	643
504	Triton	3	44	11	41	313	0	0	363	42	14	17	43	11	0	143	24	0	1,069
516	Waubesaee	0	83	29	53	334	0	0	578	0	51	10	33	75	0	506	57	0	1,809
NorthEast Total		217	1,841	497	2,130	10,057	3	0	10,357	1,178	1,539	1,663	1,793	1,173	230	3,777	4,181	16	40,682
State Total		933	2,893	815	3,098	16,744	27	0	18,284	1,729	2,109	2,396	2,918	2,799	331	6,691	5,964	18	67,761
% of State Total		23.2%	63.8%	61.0%	68.8%	60.1%	11.1%	0.0%	56.6%	68.1%	73.0%	69.4%	61.4%	41.9%	69.5%	56.4%	70.1%	88.9%	60.0%

\*Career Cluster graduates limited to three credentials within fiscal year 2014. †Total, Career Cluster graduate totals may be slightly less than previous graduate table totals.

Source of Data: ICCB Centralized Data System

# West Central Region Graduates CTE Degrees and Certificates

West Central Economic Development Region - Illinois Community College System Fiscal Year 2014 Summary of Career and Technical Education Degree and Certificate Graduates					
Dist. No.	College	Associate in Applied Science	Certificates of One Year or More	Certificates of Less Than One Year	Total
518	Sandburg	138	152	80	370
539	Wood	99	40	163	302
West Central Total		237	192	243	672
State Total		11,555	6,876	28,142	46,573
% of State Total		2.1%	2.8%	0.9%	1.4%

Source of Data: ICCB Centralized Data System

# West Central Graduates by Career Cluster

West Central Economic Development Region - Illinois Community College System Fiscal Year 2014 Summary of Graduates by Career Cluster																			
Dist. No.	College	Agriculture, Food, & Natural Resources	Architecture & Construction	Arts, AV Technology & Communications	Business Management & Administration	Education & Training	Finance	Government & Public Administration	Health Sciences	Hospitality & Tourism	Human Services	Information Technology	Law, Public Safety, Corrections & Security	Manufacturing	Marketing	Science, Technology, Engineering & Mathematics	Transportation, Distribution & Logistics	Other	Total*
518	Sandburg	0	0	5	23	99	0	0	163	0	39	20	12	66	2	69	27	0	525
539	Wood	18	16	4	27	80	0	0	169	5	5	3	11	43	1	91	0	0	473
<b>West Central Total</b>		18	16	9	50	179	0	0	332	5	44	23	23	109	3	160	27	0	998
<b>State Total</b>		935	2,893	815	3,098	16,744	27	0	18,294	1,729	2,109	2,396	2,918	2,799	331	6,691	5,964	18	67,761
<b>% of State Total</b>		1.9%	0.6%	1.1%	1.6%	1.1%	0.0%	0.0%	1.8%	0.3%	2.1%	1.0%	0.8%	3.9%	0.9%	2.4%	0.5%	0.0%	1.5%

\*Career Cluster graduates limited to three credentials within fiscal year 2014. Thus, Career Cluster graduate totals may be slightly less than previous graduate table totals.

*Source of Data: ICCB Centralized Data System*

## Implementation Efforts

- ▶ Workforce Education Strategic State Plan
- ▶ Task Advisory Groups (TAGs)
- ▶ Increased collaboration across systems
  - WIOA Interagency Team
  - Local Task Advisory Groups (TAGs) for WIOA implementation
  - Illinois Career and Academic Pathways System (ICAPS)
- ▶ Increased alignment
  - Exploring labor market data to inform program development
  - Exploring potential alignment between Perkins performance measures and the WIOA common measures
  - New ICCB Goals: Adopt and implement the Career Pathways model while expanding opportunities for Adult Education students to make smooth transitions to postsecondary education and/or CTE training programs
  - Perkins Reauthorization



## Implications and Requirements

- ▶ Shared Infrastructure Costs for the One-Stop Centers
- ▶ Shared costs related to “career services”
- ▶ Colleges as Eligible Training Providers
- ▶ Potential Perkins Reauthorization alignment

## Implications and Requirements

- Integrated Education and Training
  - Aims to provide adult education and literacy activities concurrently and contextually with workforce preparation activities
  - Targets training in occupations and clusters that assist adults in their educational and career advancement
  - Career & Technical Education is a key component of effective integrated instruction
    - Accelerating Opportunity
    - Illinois Career and Academic Preparation System (ICAPS)

## Career Services Matrix

Career Service	Method Delivery
Eligibility for Title I-B participants	
Outreach, intake and orientation	Technology
Skills and supportive service needs assessment	Technology
Labor exchange services	Technology
Program coordination and referral	
Labor market information	
Training provider performance and cost information	Technology
Performance information for the local area as a whole	Technology
Information about the availability of supportive services and referral to these services	Technology
Information and assistance with UI claims	
Assistance establishing eligibility for financial aid	Technology
Employment retention services	Technology
Follow-up services for Title I-B participants	

## Additional Resources

- ▶ [Carl D. Perkins Career and Technical Education Act of 2006](#)
- ▶ [ICCB's Postsecondary CTE website](#)
- ▶ [ICCB's Postsecondary CTE Grant Manual](#)
- ▶ [Illinois Programs of Study Guide](#)
- ▶ [OCTAE](#)
- ▶ [Perkins Collaborative Resource Network](#)

## Questions? Comments?

Brian Durham

Deputy Director for Academic Affairs

[brian.durham@illinois.gov](mailto:brian.durham@illinois.gov)

Amanda Corso

Director for Career & Technical Education

[amanda.corso@illinois.gov](mailto:amanda.corso@illinois.gov)