



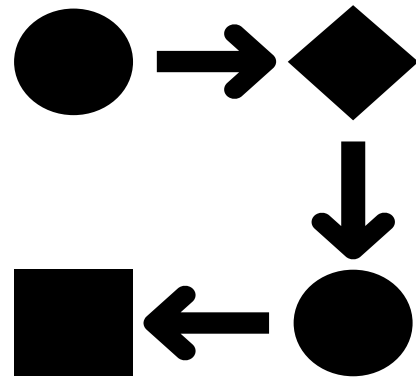
Ron Payne – Illinois Department of Employment Security
Michael Baker – Illinois Department of Commerce

WIOA Regional Planning Data Overview

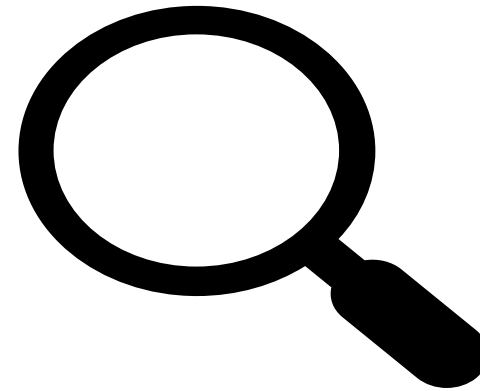
Executive Order #3



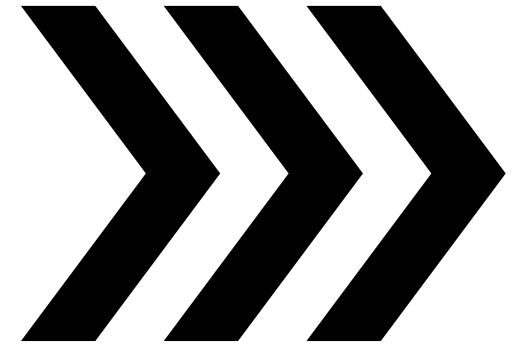
Data Driven



Develop Common
Methodology



Identify Priority
Sectors, Industries
& Occupations



Align across plans

MATURING

Industries identified as those that are important within the state but are not expected to grow during the projection period.



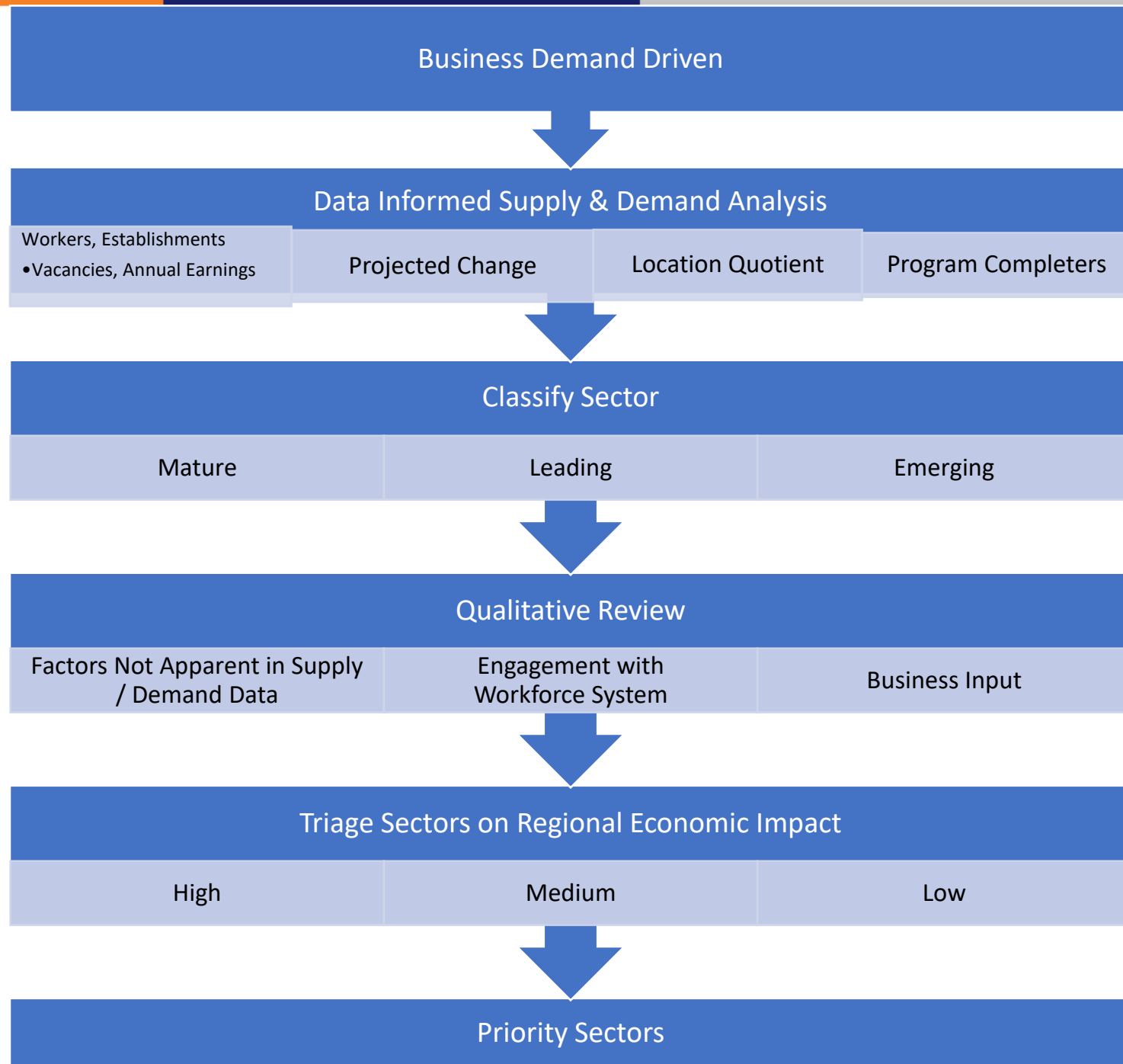
LEADING

Industries identified as those which are expected to grow during the projection period, and which are important within the state (i.e., have a location quotient that is greater than 1.0).



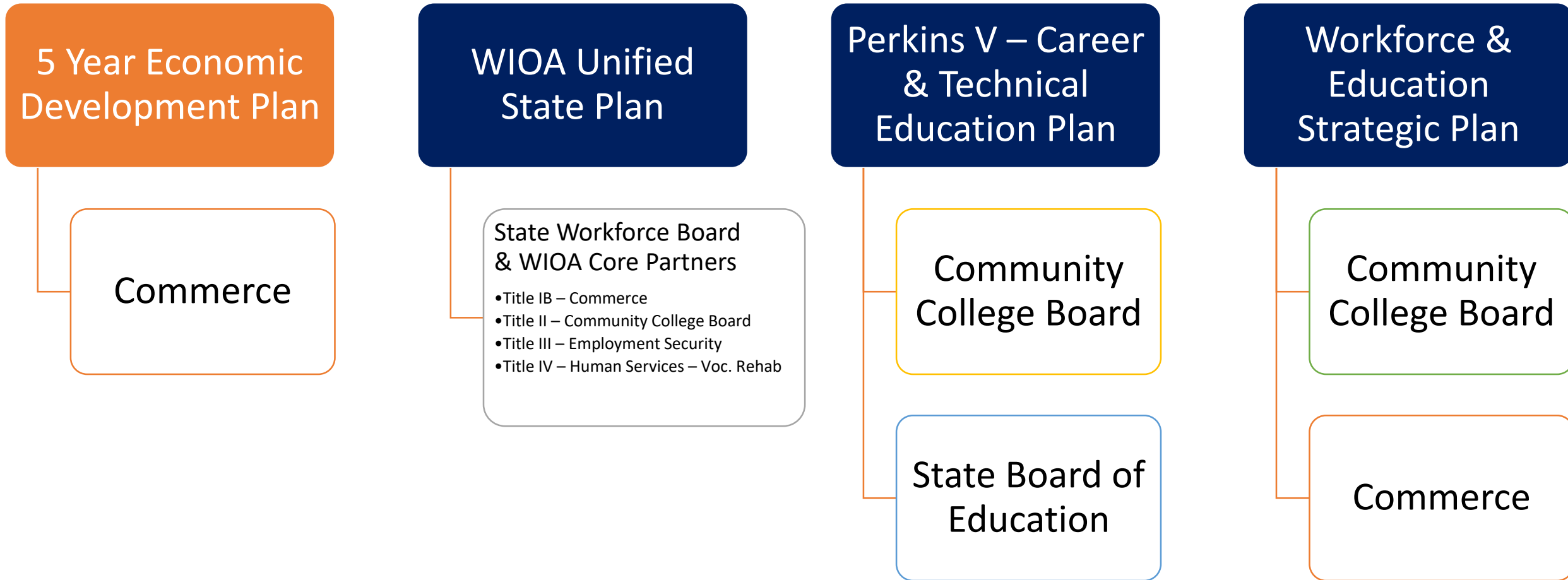
EMERGING

Industries identified as those that are not strongly represented in the current economy (i.e., have a location quotient that is less than 1.0), but are expected to grow during the projection period.



Key Workforce Related Plans

Federally Mandated Plans / Federal Requirements





DCEO
ECO DEV
STRATEGIC PLAN
(Selected Grouping of
NAICS Sectors/Industries)

Agribusiness & Ag Tech

Manufacturing

Life Sciences

Information Technology

Transportation & Logistics

Healthcare

Energy

WIOA UNIFIED STATE PLAN
NAICS Sectors/Industries

Leading Sectors
Professional &
Business Services
(Scientific & Technical)

Manufacturing

Educational Services
Public & Private

Financial Activities

Wholesale Trade

Transportation &
Warehousing

Personal & Other Services

Utilities

Emerging Sectors
Health Care
& Social Assistance

Construction

Leisure & Hospitality

Retail Trade

Information
(print & electronic media production /
distribution, telecomm, data processing)

Eco Dev Plan

Groups industries in context of growing the economy

Regional WIOA Planning
 Follow traditional industry groupings while aware of the fit into the Eco Dev Plan

